

# Batch Print Software Instructions

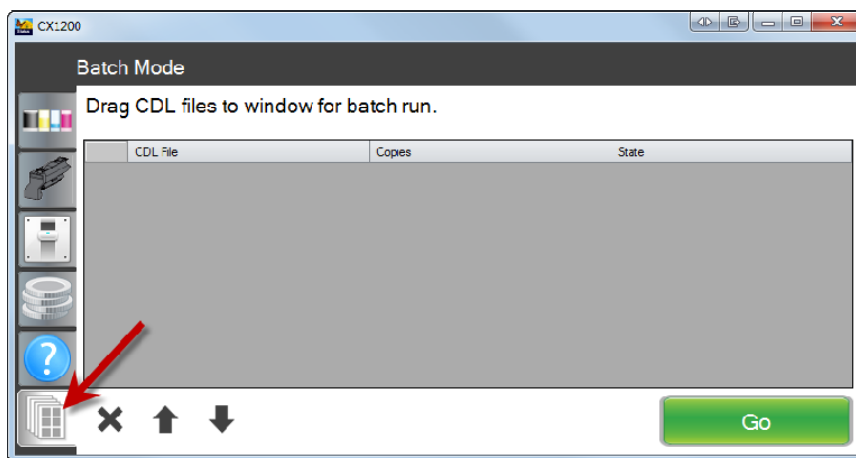
For CX1200e Color Label Press / CX1000e Color Label Printer

## Section 1: Installing the Batch Print Software

Batch Print is integrated in the latest version of the Status Monitor. Download it

here: <http://primeralabel.eu/europe/cx1200e-downloads.html>

If you already have the latest version you will see a Batch Print Tab at the bottom. Click on it to open it.



**Important Note!** This tab will only be active if you have the required memory upgrade installed. The memory upgrade unlocks the use of the software.

**Batch Print Software and Memory Upgrade: Part Number 74210**

## Section 2a: Create CDL Print Files (Same cut file or Pre-diecut/CX1000e)

*Use this method if all labels in the batch are the same size or if you are printing to the CX1000e on Pre-diecut label stock. (See 2b for different size labels)*

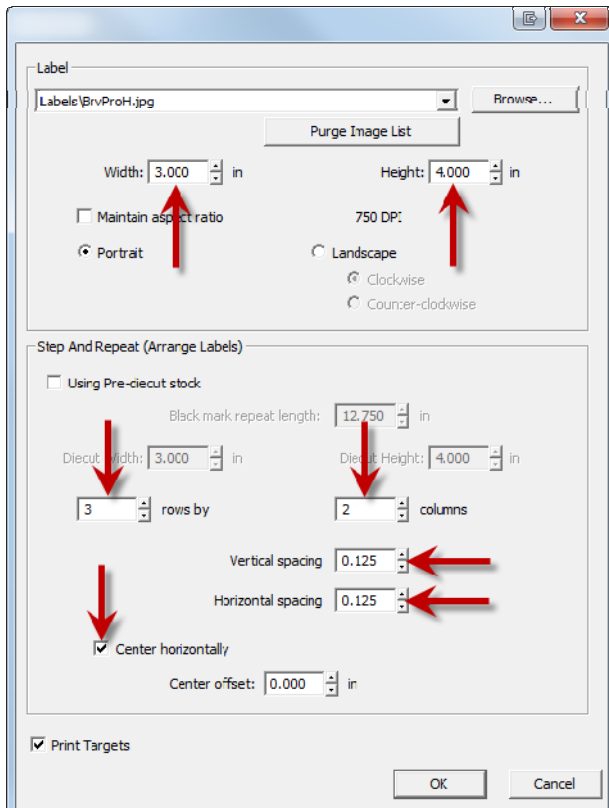
1. Use PTPrint to layout embedded .cdl files. This procedure would be exactly the same as a normal non-batch print to the CX1200e/CX1000e. Follow the instructions in the manual.

However, each label created for a batch **must have the same page lengths and the same layout specifications.**

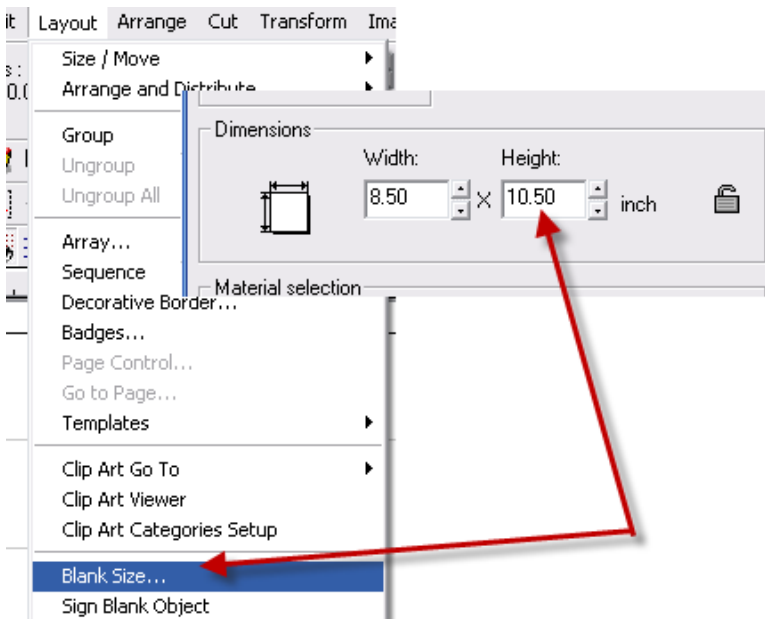
For example, if your first layout is a 3" x 4" label arrayed with two columns and three rows with 0.125" spacing between labels horizontally and vertically, all labels created for this batch should conform to the same specifications.

2. Import the same sized image file into PTPrint for each label in your batch. PTPrint will automatically repeat the specifications including the page size of the first imported image for each subsequent label created.

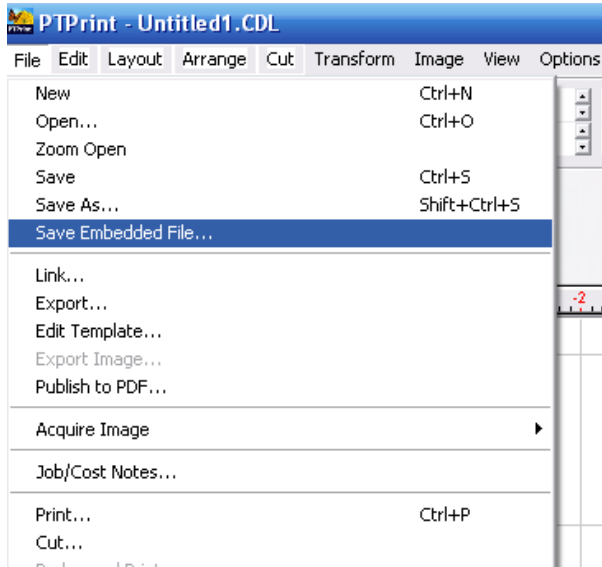
To be sure each label in your batch is the same verify all settings are the same in the setup wizard before clicking OK. The only difference should be the label source file used shown at the top of the wizard.



To verify the page size, find the Blank Size... under the Layout menu.



### 3. Save each CDL file and an **embedded File...**



4. Finally, create a cut file. (Skip this step if printing to a CX100e) Save it with the CDL file. You will use this cut file for all of the labels in the batch when you cut them on the FX1200e.

**Note:** As long as the page size and all layout specifications are the same for each label in the batch, you will only need to create one cut file.

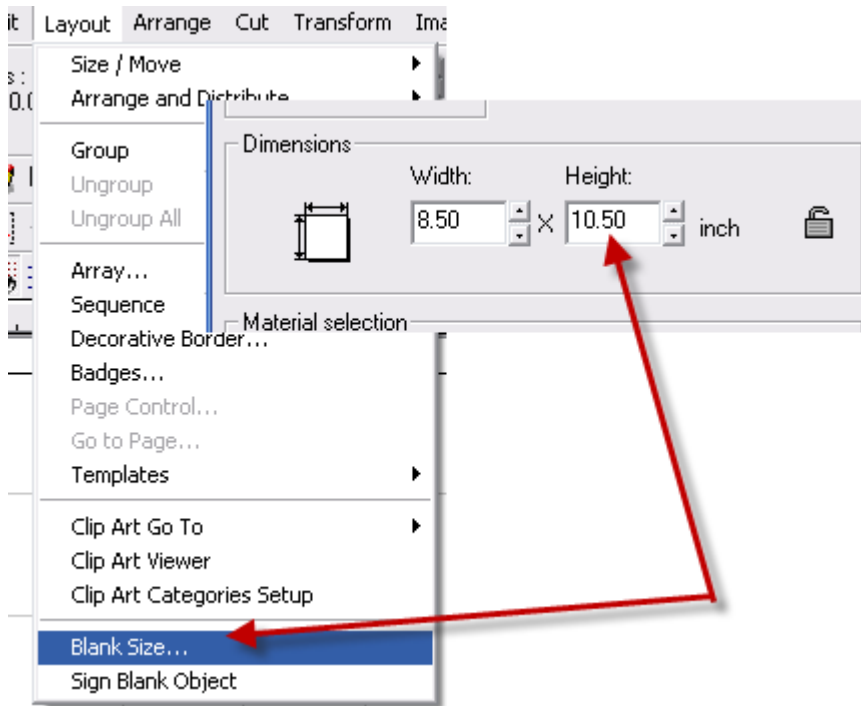
## Section 2b: Create CDL Print Files (Use different cut files)

*Use this method if labels in the batch are different sizes.*

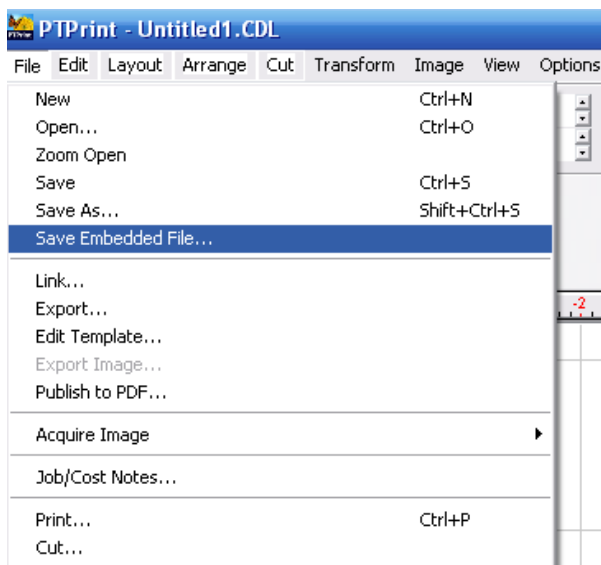
1. Use PTPrint to layout embedded .cdl files. This procedure would be exactly the same as a normal non-batch print to the CX1200e/CX1000e. Follow the instructions in the manual.

However, each label created for a batch **must have the same page lengths**.

To verify the page size, find the Blank Size... under the Layout menu.



2. Save each CDL file and an **embedded File...**



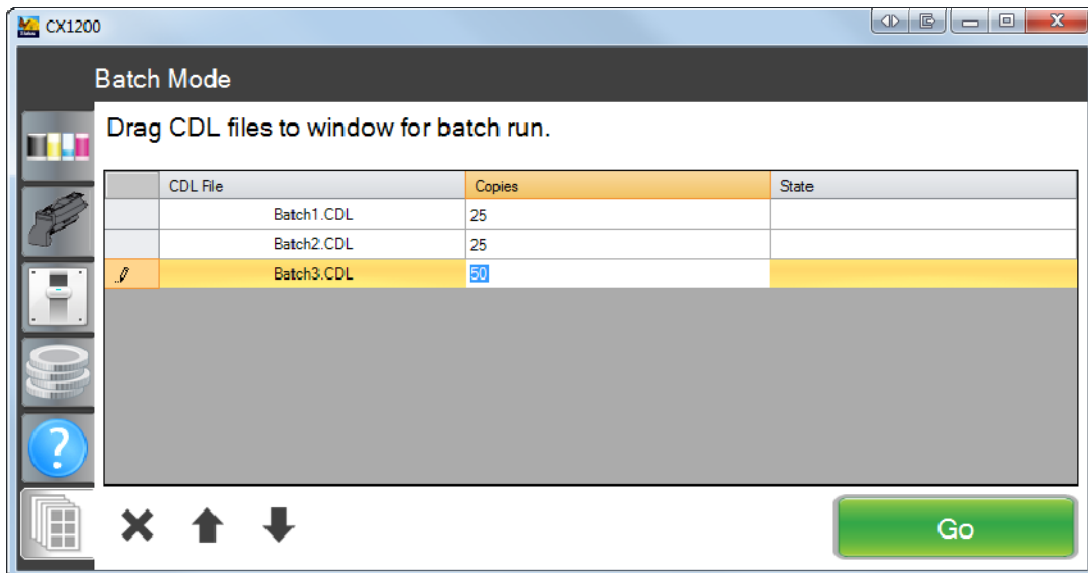
3. Finally, create a cut file. Save it with each CDL file. Name the cut file the same as the CDL file except the plt extension which is automatically added. If you ever move them to a new location, keep the cut file with the print file.

## Section 3a: Printing and Cutting (Same cut file or PreDieCut/CX1000e)

*Use this method if all labels in the batch are the same size.*

1. Open the status monitor and click on the Batch Print tab. If it is not already open, PTPrint will open in the background when the Batch Print tab is selected. **Cancel the wizard dialog that appears** but leave PTPrint open!

2. Drag and drop all of the **embedded files** you created for the batch run into the Batch Print window.



3. Set the number of copies for each file. Remember the number of copies will not necessarily correspond to the number of labels.

4. Adjust the print order using the arrow buttons.

5. Click Go to start the print job.

6. **To cut this batch job** on the FX1200e, use any one of the cut files created for each CDL file. As long as the page size and all layout specifications are the same for each label in the batch, any one of the cut files will work. (Does not apply to CX1000e)

## Section 3b: Printing using Batch Print (Use different cut files)

*Use this method if labels in the batch are different sizes.*

1. Before opening the status monitor, change the settings in the following configuration file:

C:\Program Files (x86)\Primera Technology\PTPrint\CX1200Test.exe.config (**Windows 7**)

C:\Program Files\Primera Technology\PTPrint\CX1200Test.exe.config (**Windows XP**)

2. Right click on the file and choose “edit” or “open with ... Notepad”.

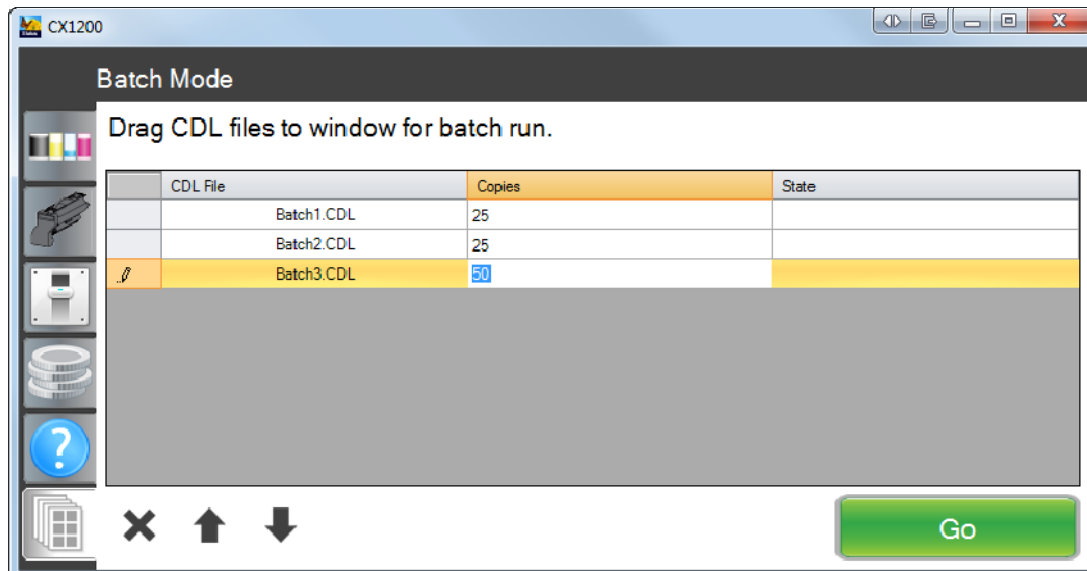
Edit the following keys to the values shown. These keys are located near the end of the file:

```
<setting name="BatchPrintCutJobSaveLocation" serializeAs="String">  
  <value>c:\cutfile\</value />
```

```
<setting name="BatchPrintSaveCopiesOfCutFilesWhenRunning" serializeAs="String">  
  <value>True</value>
```

3. Open the status monitor and click on the Batch Print tab. If it is not already open, PTPrint will open in the background when the Batch Print tab is selected. **Cancel the wizard dialog that appears** but leave PTPrint open!

4. Drag and drop all of the **embedded files** you created for the batch run into the Batch Print window.



5. Set the number of copies for each file. Remember the number of copies will not necessarily correspond to the number of labels.

6. Adjust the print order using the arrow buttons.

7. Click Go to start the print job.

**8. To cut this batch job** on the FX1200e, use the combined cut file with a \*.ptip extension that will be created in c:\cutfile\ folder after you click "Go". Use it instead of the individual cut files to cut your batch job on the FX1200e.

**Note:** When cutting the batch job using this method it is very important to start the cut job on the very first page of the batch printing job. This way PTFinish will increment to the next cut in the batch job at the correct location. The number of printed copies is imbedded into the ptip cut files and will be automatically set in PTFinish. To adjust cut depth and offset values, simply open the cover of the cutter to pause the job, adjust the values and then close the cover to continue. Do not adjust the number of copies or stop the job. The correct incremented cut file location will be lost!